

Sitecore Foundry

What's New?

An Overview of the improvements in Sitecore Foundry 2.1.0 rev.080624

Table of Contents

Chapter 1	Major Improvements	3
1.1.1	New and improved Multi Site Control Center (MSCC)	3
1.1.2	Performance improvements:.....	3
1.1.3	Choose layout/sublayout per site type.....	4
1.1.4	Scaling of images for image collections before upload	4
1.1.5	Filtering of skin packages	4
Chapter 2	Medium Improvements	5
2.1.1	Overview of locked items	5
2.1.2	New Functionbar settings	5
2.1.3	Individual language for editors.....	6
2.1.4	Personalization	6
2.1.5	Preview	6
2.1.6	Publishing viewer available on local administrator menu	6
2.1.7	Customize side bar titles.....	6
2.1.8	Mailinglist subscribers view per list.....	7
2.1.9	Items outside publishing period is visible in webedit mode	7
2.1.10	Fixed known bugs	7
Chapter 3	Minor Improvements	8
3.1.1	Broken links tool available	8
3.1.2	Recycle bin available	8
3.1.3	Report Untranslated fields available	8
3.1.4	Meta data title available in wizard.....	8
3.1.5	Access to Sitecore desktop and application options available	8
3.1.6	Content language available at site creation time	8
3.1.7	Content languages and client language settings	8
3.1.8	Language and translation	9
3.1.9	Default language setting	9
3.1.10	Meta tags	9
3.1.11	Search index setting	9
3.1.12	Default skin now a part of standard skin package	9
3.1.13	Wysiwyg.....	9
3.1.14	Sitecore improvements	9
3.1.15	Html 4.0 compliant	9
3.1.16	Collapsed sections.....	10
Chapter 4	Cosmetic Improvements	11
4.1.1	Module descriptions collapsed.....	11
4.1.2	Rich text in abstract fields.....	11
4.1.3	Polished content tree	12
4.1.4	Added search icon to functionbar	12
4.1.5	Floating toolbar in webedit.....	12
4.1.6	Readable paths to image collections in media library	12
4.1.7	Easier to add images to existing collections.....	12
4.1.8	More options to choose from for content bars	12
4.1.9	Polished welcome page.....	12
4.1.10	Enabled client side validation for forms	12
4.1.11	Navigation menus show snippets from abstract if present	12

Chapter 1

Major Improvements

1.1.1 New and improved Multi Site Control Center (MSCC)

- Cleaner and more intuitive UI.
- Site list improvements:
 - Site list can now be sorted by column, both ascending and descending order
 - Site list now has more information (columns) including the administrator name/initials, e-mail and site creation date.
 - Paging is enabled.
 - Search and filter capabilities for sites list are implemented.
 - More functionality in right-click popup menu, including backup, edit and delete.
 - Now you can display the total number of created and active sites.
- It's now possible to edit site properties from the MSCC without directly editing the content item.
- The new wizard for site creation is implemented. In the new wizard the default content language for new local users can be set.
- Site backups can now be scheduled to be performed regularly.
- SMS sub-accounts can now be created on per site basis through the MSCC.

1.1.2 Performance improvements:

Now sites have html caching in live mode on per site basis. The site cache is cleared when a user saves an item of this site. Only the site having content updated gets its cache cleared.

A few new caches for site, system, module settings, site types and site templates were added.

Further performance improvements have been made to

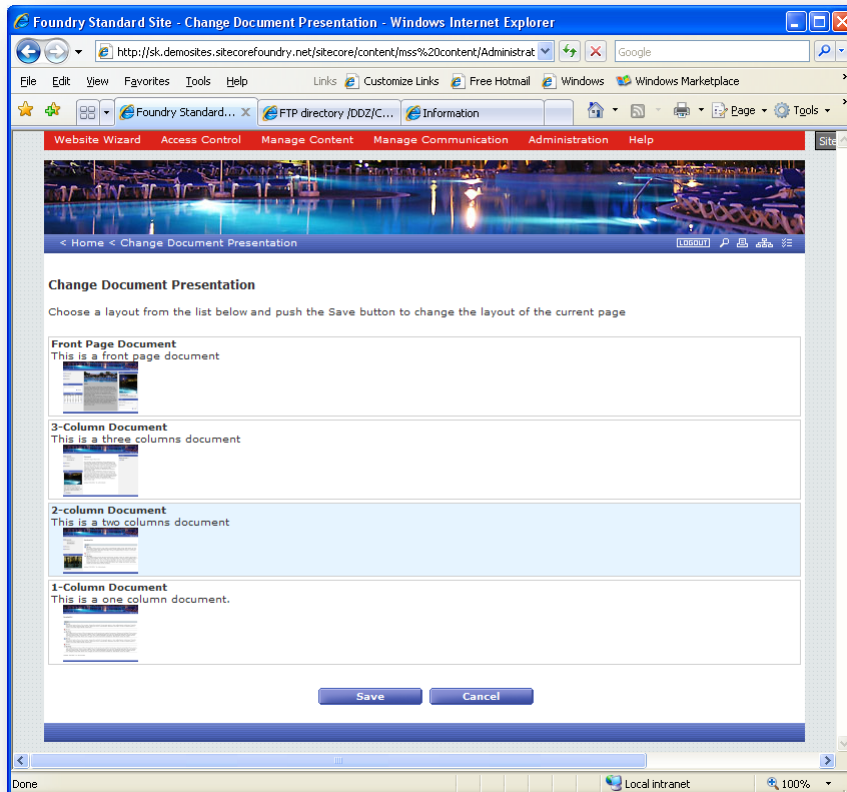
- XSL renderings
- Foundry modules
- .NET user controls
- Dictionary

- Security domain
- Foundry XslHelper methods

The testing has shown that all the measures listed in this section have improved the performance substantially.

1.1.3 Choose layout/sublayout per site type

This improvement provides a set of predefined layouts that local administrators and editors can choose from. This provides more flexibility to customers.



1.1.4 Scaling of images for image collections before upload

Images uploaded to image collections can be scaled down before uploading to save disk space on server and the bandwidth while uploading.

1.1.5 Filtering of skin packages

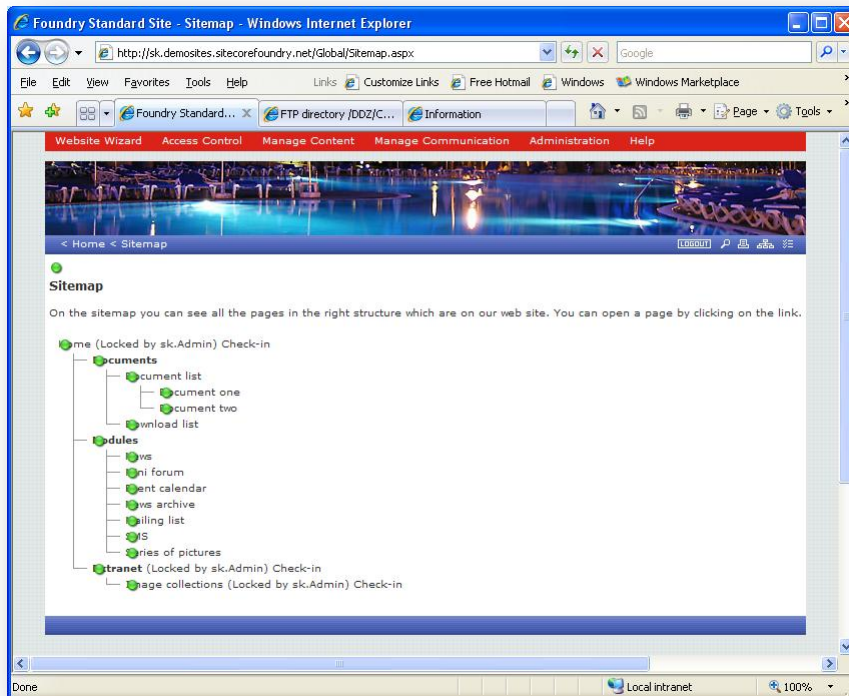
The skin packages are now filtered per site type. It is possible to specify which of the skin packages work with specific site types. The skin packages were not filtered previously and all skin packages were available to all site types.

Chapter 2

Medium Improvements

2.1.1 Overview of locked items

Locked items are now indicated to editors on the Sitemap in the editing mode. Editors can check their own documents in using the sitemap. A local administrator can check locked items in for all local editors. A label beside the locked item is shown along with a “Check-in” link button if the user has the proper rights.



2.1.2 New Function bar settings

Settings for the Function bar, which is the global navigation bar containing sitemap, contact form, printer friendly version, login button, etc., have got the new settings. Now it is possible to enable/disable each of the functions

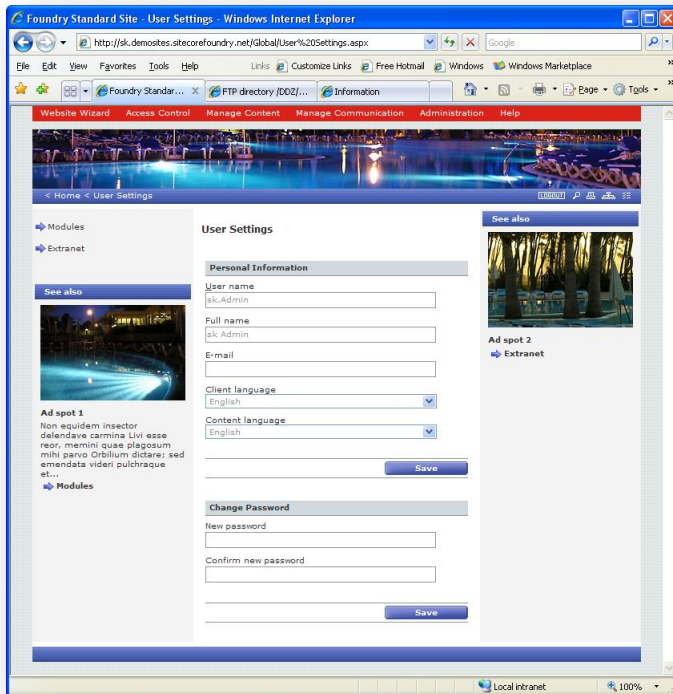
(icons). Settings for the standard site type are available via the following path `/sitecore/content/mss content/Administration/Lookup tables/Sitetypes/Standard Site/Settings/System/FunctionBar`.

2.1.3 Individual language settings for editors

Language settings for Sitecore client and content language can be set individually for every local user.

2.1.4 Personalization

It is possible for local users to specify their own personal information like e-mail, full name, content language and password, (for example, see <http://sk.demosites.sitecorefoundry.net/Global/User%20Settings.aspx>)



2.1.5 Preview

Preview functionality works with publishing restrictions even in live mode now.

2.1.6 Publishing viewer available in local administrator menu

Publishing viewer now available from the Manage Content menu in the local administration menu.

2.1.7 Customize side bar titles

Both left and right sidebar columns can now have individual titles and override the default text "See also". The title bars can be hidden altogether.

2.1.8 Mailinglist subscribers view per list

In the Mailinglist administration dialog it is now possible to show the list of users subscribed to a specific list.

2.1.9 Items outside publishing period are visible in webedit mode

Items outside publishing period are visible in the WebEdit mode highlighted with italic. The publishing viewer is now quickly accessible from the Manage Content menu item. Previously items outside of publishing period simply disappeared in webedit mode, which made it really hard to locate the item again and edit it.

2.1.10 Fixed known issues

A number of known issues has been fixed. See the release notes for details.

Chapter 3

Minor Improvements

3.1.1 Broken links tool available

It is now possible to scan a site for broken links.

3.1.2 Recycle bin available

It is now possible to view the recycle bin on per site basis. Local administrators and editors can now restore documents. It is no longer necessary to contact a system administrator to restore deleted content.

3.1.3 Report Untranslated Fields feature available

The report with untranslated fields is now available.

3.1.4 Meta data title available in wizard

It is possible to set the site title tag in the site wizard.

3.1.5 Access to Sitecore desktop and application options available

Access to Sitecore desktop through new local administration menu item is now available. Path to the standard site settings: */sitecore/content/mss content/Administration/Lookup tables/Sitetypes/Standard Site/Settings/System/Settings*

3.1.6 Content language setting available at site creation time

When creating a new site it is now possible to define the Content Language for the site used for users created on the new site.

3.1.7 Content languages and client language settings

Available content languages and client languages can now be set individually for each site and site type. The path to the standard site settings: */sitecore/content/mss content/Administration/Lookup tables/Sitetypes/Standard Site/Settings/System/Settings*.

3.1.8 Language and translation corrections

English language misspellings and missing texts along with the Danish translation have been corrected.

3.1.9 Default language setting

The feature of having a default language for items without content in the chosen language and a default language that items without content in a selected language display instead, can now be disabled/enabled on per site and per site type basis.

3.1.10 Meta tags

Meta tags section has been added to the documents. This will make the search engine optimization easier.

3.1.11 Search index setting

Documents can be skipped by Lucene indexing if needed. New setting on documents is added.

3.1.12 Default skin is now a part of the standard skin package

The standard site's default skin has been made a part of the Culture skin package, so people can select it.

3.1.13 Wysiwyg

Now content in rich text fields with formatting and paragraph styling looks exactly as it does on the website.

3.1.14 Sitecore improvements

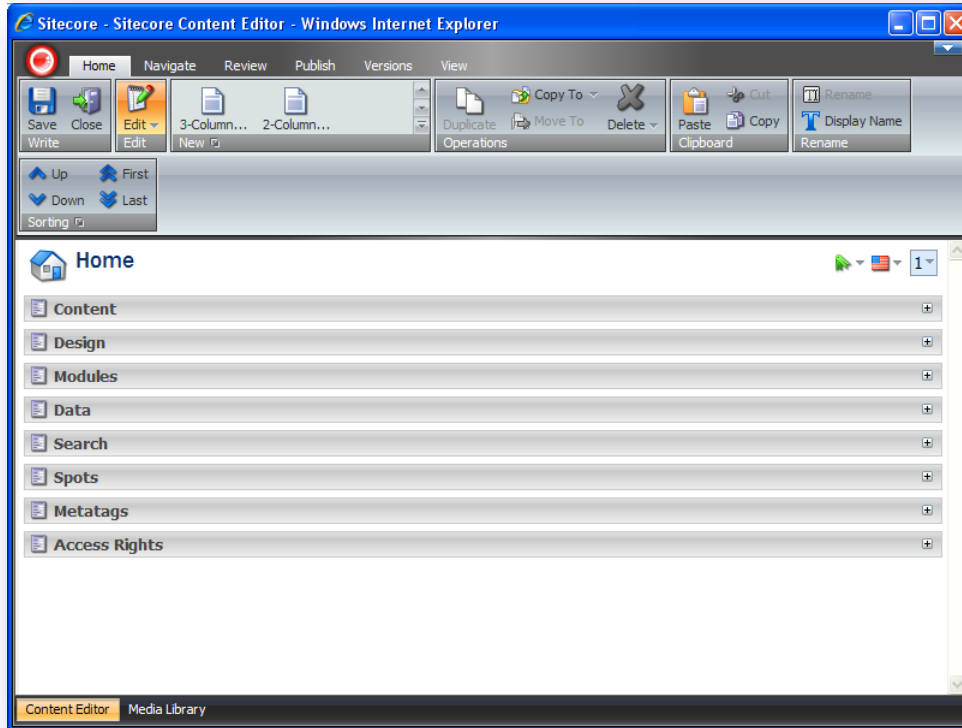
Sitecore Foundry is now based on Sitecore CMS version 5.3.2.2453 with all the improvements of the latter.

3.1.15 Html 4.0 compliant

A standard site now passes HTML 4.0 validation.

3.1.16 Collapsing sections

In Content Editor sections of fields can now be collapsed. The feature can be enabled/disabled. Also the first section (by the sort order) can be expanded by default with the rest of the sections collapsed. It makes sense for novice users to only see the important fields of a document, which should be in the first section. The path to the setting: */sitecore/content/mss content/Administration/Lookup tables/Sitetypes/Standard Site/Settings/System/Sitecore.*

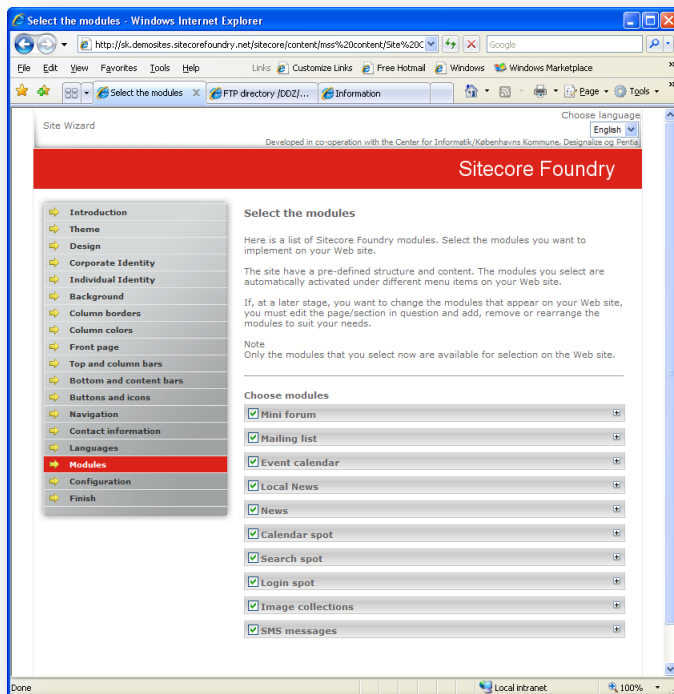


Chapter 4

Cosmetic Improvements

4.1.1 Module descriptions collapsed

In wizard on selecting modules, the descriptions are collapsed by default in order to give a better overview



4.1.2 Rich text in abstract fields

Abstract field on documents have been turned into rich text fields with limited text formatting options like italic, bold, alignment, bullets etc.

4.1.3 Polished content tree

Content tree have had nicer display names added to improve readability

4.1.4 Added search icon to functionbar

A search icon have been added to the Functionbar. Can be disabled (hidden)

4.1.5 Floating toolbar in webedit

The floating toolbar (menu) can now be enabled in webedit mode. Content path: `/sitecore/content/mss content/Administration/Lookup tables/Sitetypes/Standard Site/Settings/System/Settings`

4.1.6 Readable paths to image collections in media library

Uploading image collections shows nice display names for the collections instead of guid names.

4.1.7 Easier to add images to existing collections

Image collections now have a plus sign added for each collection in webedit mode to let the user know they can easily add more images

4.1.8 More options to choose from for content bars

In Wizard the Content bars have more options added (graphics). Previously only had one.

4.1.9 Polished welcome page

Welcome page now have proper graphics for text etc. A bit nicer looking

4.1.10 Enabled client side validation for forms

Previously it was done server side only

4.1.11 Navigation menus show snippets from abstract if present

Previously only document title was displayed in top and sub menu. Now, if an abstract is present, it is displayed