



Sitecore CMS 6.6 & DMS 6.6

What's New

A quick guide to the new features in Sitecore 6.6

Introduction

This document describes the new features and changes introduced in Sitecore CMS 6.6. Readers of this document should be familiar with Sitecore, its interfaces and general architecture.

The main improvements include:

- Native MVC Support
- Device Simulator
- Page Editor improvements
- Executive Insight Dashboard
- Sitecore now uses Lucene.NET 2.9.4
- Support for SQL Server database mirroring
- Support for using separate databases for collecting and reporting DMS data
- Ability to restore individual versions from the Archive and Recycle Bin

This document contains a brief description of each feature and tells you where to find more information about each feature that has been documented.

Sitecore 6.6 Features

Native MVC Support

Sitecore 6.6 introduces native support for MVC and allows you to use ASP.NET MVC as a rendering engine in Sitecore. While some support for ASP.NET MVC was available in earlier versions, Sitecore 6.6 provides access to much more ASP.NET MVC 3 functionality.

Sitecore's MVC solution requires .NET Framework 4 and Microsoft ASP.NET MVC 3. You must enable MVC support as it is disabled by default to prevent you encountering problems if you are running on earlier version of the .NET Framework.

In Sitecore, MVC support is mainly pipeline driven and provides a powerful, flexible, and extendable API for controlling the rendering process.

In the Sitecore installation program, MVC is enabled in the standard installation.

For more information about installing and enabling MVC, see the *Sitecore MVC Developer's Reference Guide*.

Device Simulator

In the Page Editor, content authors can now see what the webpages they are working on will look like on several different mobile devices.

To preview a page in the **Device Simulator**:

1. In the Page Editor, on the **Experience** tab, in the **Mode** group, click **Preview**.

- In the **Simulator** group, click the drop-down arrow and then select a device.



The device simulator mimics the devices and the preview is not a pixel-perfect rendition of the website as it appears on each device. However, it gives you a good indication of how the device presents the website and allows content authors to quickly see how their pages look on these different mobile devices.

In the simulator, you can navigate through the website, rotate the pages, as well as scroll vertically and horizontally.

For more information about the Device Simulator, see the manual *Content Author's Reference and Cookbook*.

Page Previewer

The Page Previewer complements the device simulator by enabling you to preview webpages in different browsers.

The Page Previewer lets you see how your web pages look on different versions of all the major internet browsers — Internet Explorer, Firefox, Chrome, and Safari. You can test the pages any time to make sure the web design looks as intended in your customers' browsers. The page preview service is delivered by Litmus.

This service is only available by subscription from the Sitecore App Center. You can subscribe directly from the Page Editor ribbon when you are in Preview mode.

Page Editor Improvements

Sitecore 6.6 introduces a number of improvements to the Page Editor.

In the Page Editor you can now:

- Use the Analyze group to assign content profiles to content items.
- See workflow commands in a notification bar and use it to move items through a workflow.
- Use the Move Page command on the ribbon to move pages.
- Use the Delete Page button on ribbon to remove pages.

The functionality that is available in the floating toolbar has been extended to include:

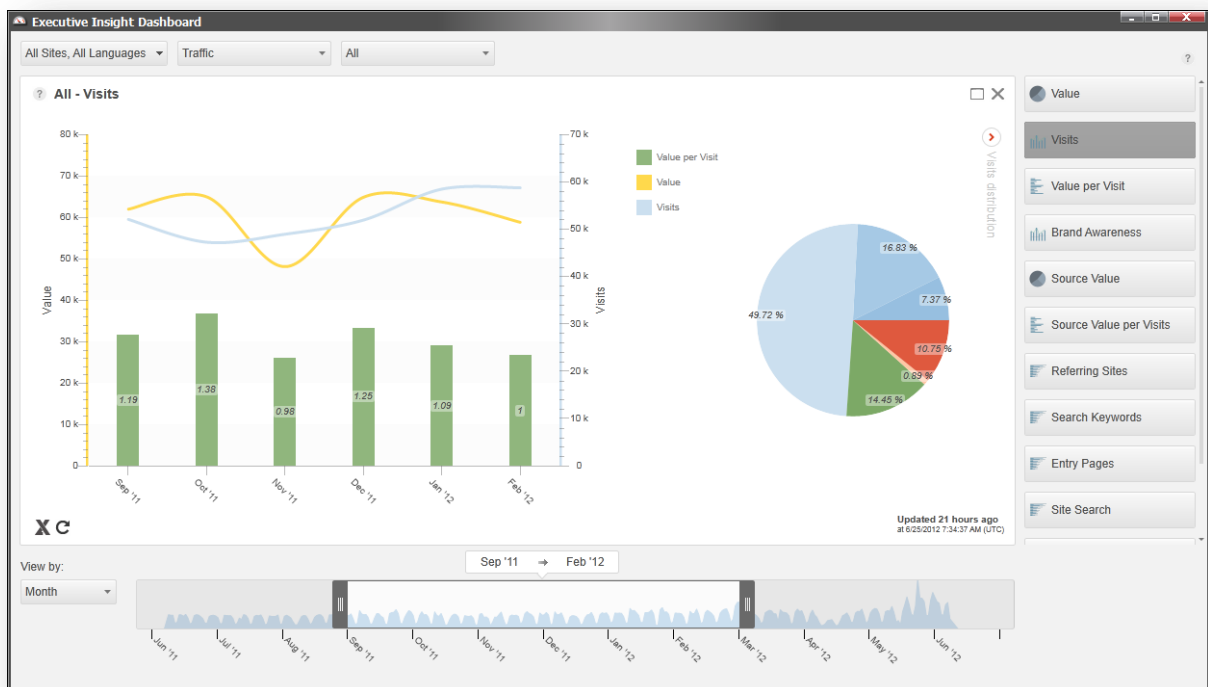
- The Set Associated Content dialog that enables you to select content to use as a data source.
- Adding new commands to the floating toolbar. For example, you can add Sort the content to the floating toolbar. The Sort the content command enables you to change the order of content items.

For more information on the Page Editor, see the *Content Author's Cookbook* and the *Marketing Operations Cookbook*.

Executive Insight Dashboard Improvements

The Executive Insight Dashboard for Sitecore CMS 6.6 runs on Silverlight 5.

There is a new UI, new ways to navigate and improved search for campaigns but all the other functionality of the dashboard remains much the same as before.



Changes and new features in the dashboard include:

- Improved UI design, layout and color scheme.
- New timeline and resolution controls. Single days and periods of incomplete data are now available.
- The day resolution is now always available rather than just for the first 30 days.

- You can filter the dashboard by site and language.
- You can search for individual campaigns.
- A new caching policy plus the availability of a single day resolution means that you click the Reload data button to refresh data instantly.
- The dashboard contains Help text on individual charts and for the dashboard as a whole.
- Show or hide the trend table on all charts and right click charts to drill down .

For more information, see the *Executive Dashboard Cookbook*.

Support for SQL Server Database Mirroring

Sitecore 6.6 supports SQL Server database mirroring and failover. Implement this strategy to increase the availability of your Sitecore databases. Also, in the event of a disaster, you can use automatic failover to quickly bring a standby copy of your database back online.

Database mirroring transfers transaction log records directly from one server to another (between the *Principal* and *Mirror* instance) and can quickly fail over to the standby server.

To set up database mirroring with automatic failover you need at least three database server instances; a principal, a mirror and a witness. You need strong SQL Server skills as you need to perform a large part of the set up and configuration in SQL Server but there are also some important steps you need to follow in Sitecore to set up and configure database mirroring and failover.

For more detailed information, see the Sitecore *Scaling Guide* for CMS 6.6 and the MSDN article [Database Mirroring \(SQL Server\)](#).

Using Separate Databases for Collecting and Reporting

Sitecore 6.6 supports the use of separate databases for collecting data and for reporting. This implementation improves the performance of both writing data to the database and extracting data from the database.

You must install an SSIS package and set up a SQL Server Agent Scheduled Job that runs periodically and transfers data from the collection to reporting database.

For more detailed information about configuring Sitecore to use separate databases for collecting and reporting, see the *Engagement Analytics Configuration Reference Guide*.

Other Features

The other features introduced in Sitecore 6.6 include:

- Sitecore has been upgraded to Lucene.NET 2.9.4.
- Dictionary improvements — the introduction of dictionary domains improves the dictionary functionality in Sitecore and allows you to define as many separate dictionaries in a solution as you wish.

You can create dictionary domain folders anywhere in the content tree and in any database thereby allowing you to configure the location of the dictionary for multisite solutions.
- The Sitecore Archive and Recycle Bin now support archiving, recycling, and restoring of item versions.
- Since the release of Sitecore 6.5 Update 4, Sitecore has supported the use of separate databases for collecting data and for reporting. This implementation improves the performance of both writing data to the database and extracting data from the database. The

collection database has been optimized for writing data and for the limited extraction of data.
The reporting database has been optimized for the mass extraction of data.

This feature is now documented in the *Engagement Analytics Configuration Reference Guide*.