

# Sitecore Intranet Portal Installation Guide.

Author: Sitecore A/S  
Date: August 18, 2009  
Release: Revision 1.1  
Language: English

*Sitecore is a trademark of Sitecore A/S. All other brand and product names are the property of their respective holders.*

*The contents of this document are the property of Sitecore A/S. Copyright © 2001-2009 Sitecore A/S. All rights reserved*

Sitecore Denmark  
Meldahlsgade 5,4  
1613 Copenhagen V

Contents:

<b>Chapter 1</b>	<b>Sitecore Intranet Portal Installation Guide</b>	<b>3</b>
1.1	Hardware and Software Requirements	3
1.2	Introduction to Installation	5
1.3	Databases Setup	5
1.4	Sitecore Intranet Client Part Setup	10
1.5	Important Notes:	16
1.6	Troubleshooting	17

# Chapter 1

## Sitecore Intranet Portal Installation Guide

This article describes the Sitecore Intranet Portal installation program which guides you through the setup process.

### 1.1 Hardware and Software Requirements

Service Pack 2 is required for all machines running Windows XP; Service Pack 1 is required for Windows 2003. Use Microsoft Windows Update (<http://windowsupdate.microsoft.com>) to patch, install the .NET framework 3.5 and reboot until the site reports no remaining relevant updates are available.

Sitecore highly recommends Microsoft SQL Server 2005 running on a separate machine for servers, Microsoft SQL Server Express Edition and Visual Studio .NET 2005 for developer workstations. It is generally preferable to install IIS at the time of or before the .NET framework rather than after .NET has been installed. These instructions assume a patched instance of Windows XP Professional SP2 or Windows Server 2003. To verify, choose Start » Control Panel » System and look on the General tab.

Some antivirus Software can be detrimental to performance of ASP.NET applications such as Sitecore Intranet Portal. Use only those antivirus scanners certified for the operating system (see <http://cert.veritest.com/CfWreports/server>).

All hardware should meet the minimum criteria outlined by Microsoft and/or other respective software vendors for the relevant component configurations such as a Windows XP workstation or Windows 2003 ASP.NET server.

#### Minimum Client Requirements

- Pentium IV
- 512MB RAM
- Patched Microsoft Internet Explorer 6 Service Pack 1 with MSXML4 or better required for front-end user interface. Firefox 2.0 is partially supported.
- 256K or faster network connection to Sitecore Intranet Portal server
- 1024x768 or greater resolution (higher resolution may be required for some features)

#### Minimum Server Requirements

In addition to typical IIS/ASP.NET server requirements defined by Microsoft, a Sitecore Intranet Portal server should meet the following criteria:

- See Minimum Client Requirements if the server will also be used for front-end editing
- Pentium IV, dual CPUs recommended
- 2 GB RAM, 4GB recommended
- Patched 32-bit Microsoft Windows XPSP2 or 2003SP1 with IIS and ASP.NET 2.0
- Microsoft SQL Server 2005. It is highly recommended that SQL Server is installed on a separate machine.

### **Minimum Development Platform Requirements**

- See Minimum Client Requirements
- 1 GB RAM
- Patched 32-bit Microsoft Windows XPSP2 or 2003SP1 with IIS and ASP.NET 2.0
- Microsoft SQL Server 2005 Express Edition running locally is highly recommended, SQL Server 2005 optional
- Microsoft Visual Studio .NET highly recommended

Patched Microsoft Internet Explorer 6 Service Pack 1 with MSXML 4 or better required for Sitecore Intranet Desktop.

Projecting hardware requirements to meet specific requirements depends on too many variables to be covered here; see

<http://sdn5.sitecore.net/Articles/Administration/Sitecore%20Performance.aspx>.

### **Prerequisites**

Before installing Sitecore Intranet Portal, obtain:

- Microsoft SQL Server 2005 or 2005 Express Edition installed and patched (optional, on separate servers as appropriate)
- Visual Studio .NET 2005 (optional)
- Administrative rights to the machine(s) and/or database server(s)
- A valid Sitecore Intranet Portal license file

Always perform complete backups to any system before making significant changes or installing software.

### **Internet Information Services**

Internet Information Services (IIS) and the appropriate version of ASP.NET must be installed. To verify, select Start » All Programs » Administrative Tools » Internet Information Services (IIS) Manager.

If IIS is not installed:

1. Select Start » Control Panel » Add or Remove Programs

2. Select Add/Remove Windows Components
3. Select Application Server from the list
4. Select OK; the system may prompt for operating system installation media
5. The system may need to reboot

### SQL Server

For SQL Server 2005 and 2005 Express Edition, be sure to choose mixed-mode authentication and note the password for the “sa” user.

For Microsoft SQL Server 2005 Express Edition install on the Sitecore host from <http://msdn.microsoft.com/vstudio/express/sql/download>. Choose Mixed Mode authentication and note the password for the “sa” user.

**Note:** it is strongly recommended to use SQL Server authentication for Sitecore Intranet SQL connections. This is how configuration files are tuned by default.

Including the Management Studio Express option under Client Components is highly recommended.

Install the latest service packs and updates from Microsoft (at the time of this writing, Service Pack 2 for 2005 and Service Pack 2 for 2005 Express).

## 1.2 Introduction to Installation

Sitecore Intranet Portal installation program consists of two separate.exe installation files:

- setup\_SCIntranetPortalXXrevXXXXXXX.exe
- setup\_SCIntranetPortalXXrevXXXXXXX\_DB.exe

If you wish to setup both the Sitecore Intranet SQL databases and the Sitecore Intranet Client on the same machine, you will only need the setup\_SCIntranetPortalXXrevXXXXXXX.exe file.

If the databases are to be hosted on a separate database server, you should run setup\_SCIntranetPortalXXrevXXXXXXX\_DB.exe on that server first, and then perform the installation of the Sitecore Intranet Client on the client machine.

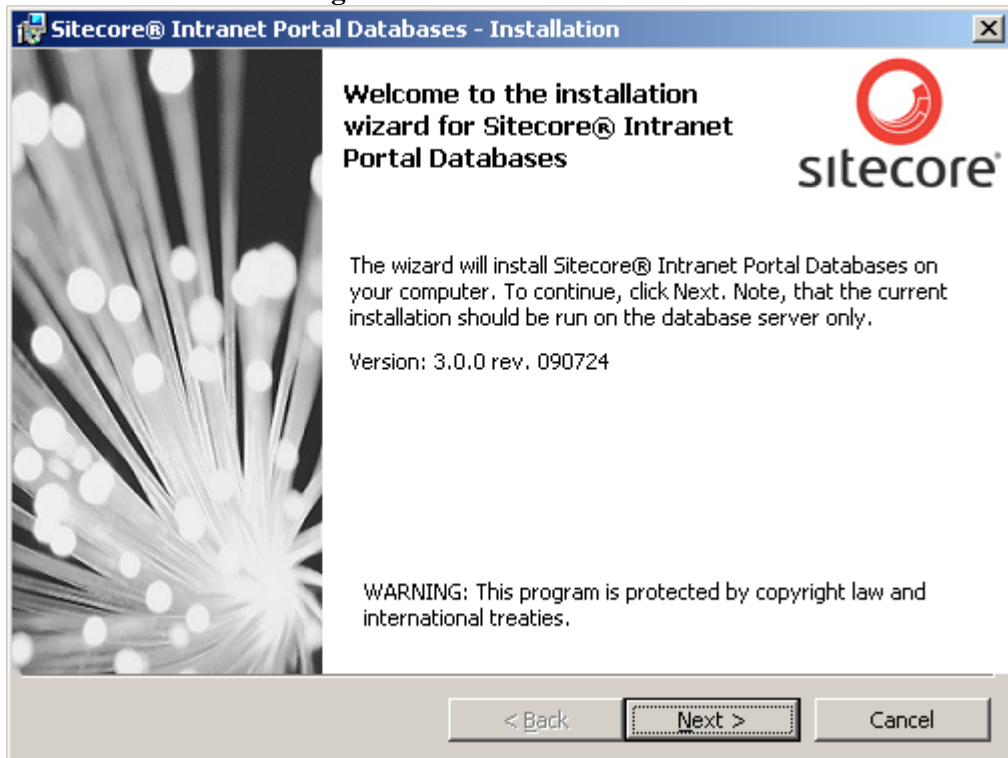
The manual below describes the correct way of Sitecore Intranet Portal installation.

## 1.3 Databases Setup

Below we consider the case when the databases are hosted on a separate database server.

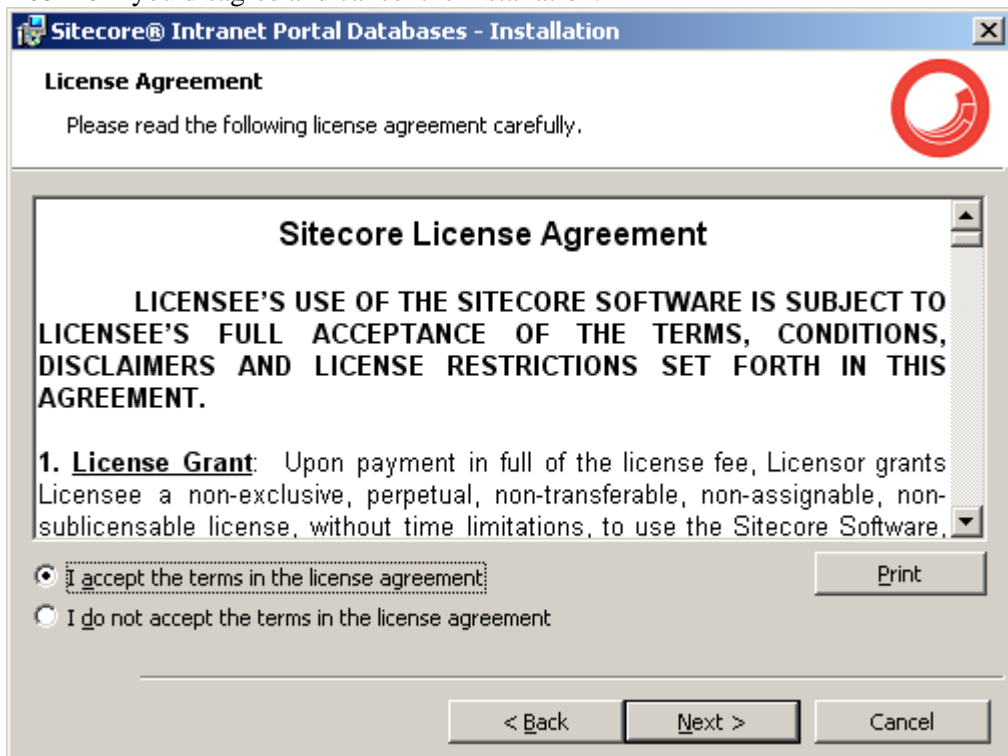
Start the setup\_SCIntranetPortalXXrevXXXXXXX\_DB.exe file and follow the instructions provided by the setup wizard. Below is a description of the wizard’s steps.

1. Review the **Welcome dialog**.

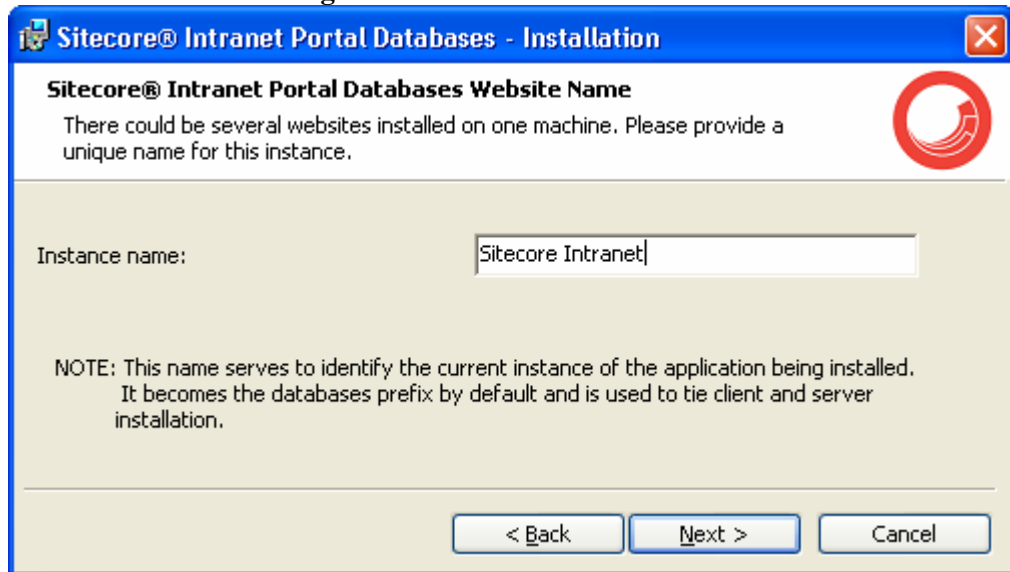


2. **The License Agreement dialog**.

Read the license terms and select **Accept** if you agree to continue the installation, or **Decline** if you disagree and cancel the installation.



### 3. The Instance Name dialog.

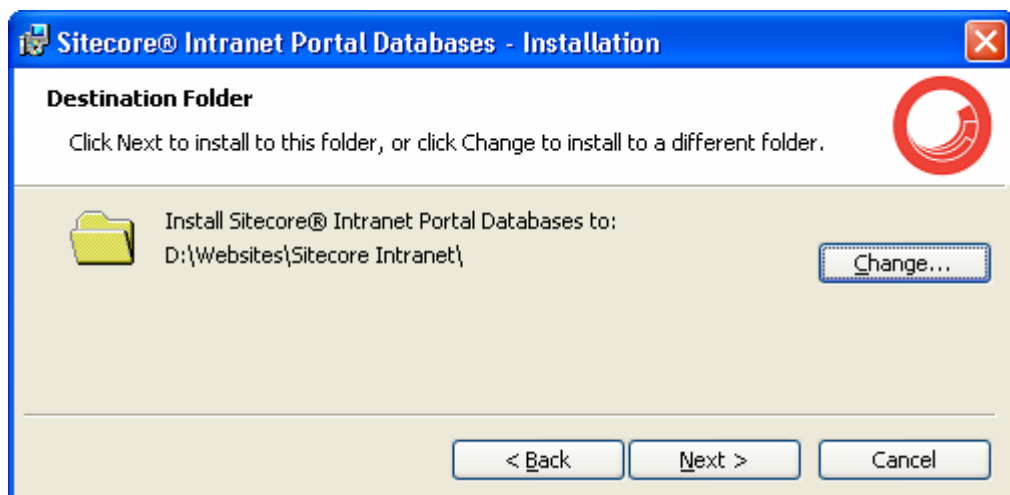


The Instance Name is a unique folder name for the database files to be stored.

### 4. The Destination Folder dialog.

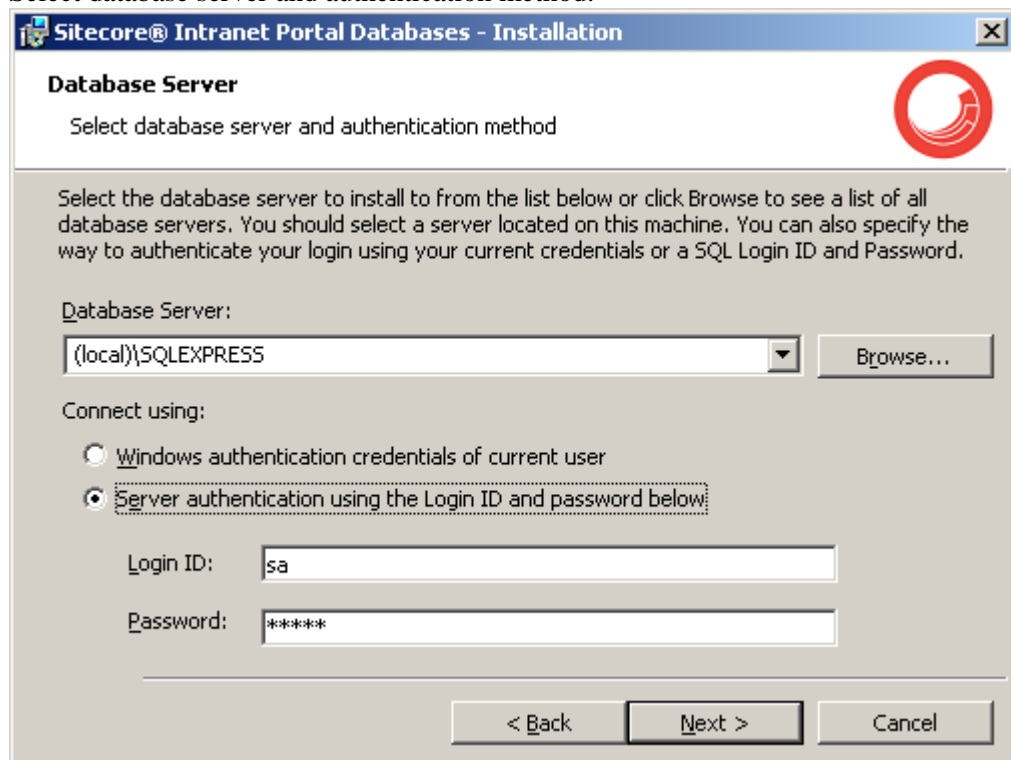
This dialog allows changing the default destination folder for the Sitecore databases.

You should also use this path during the installation of the Sitecore Intranet Client afterwards. This path will be written in to the configuration files to specify the database location.



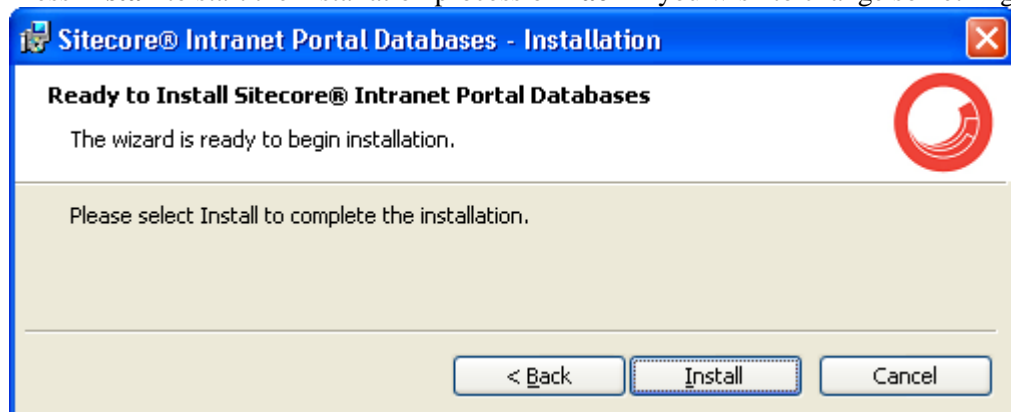
5. **The Database Server dialog**

Select database server and authentication method.



6. **Ready to Install dialog.**

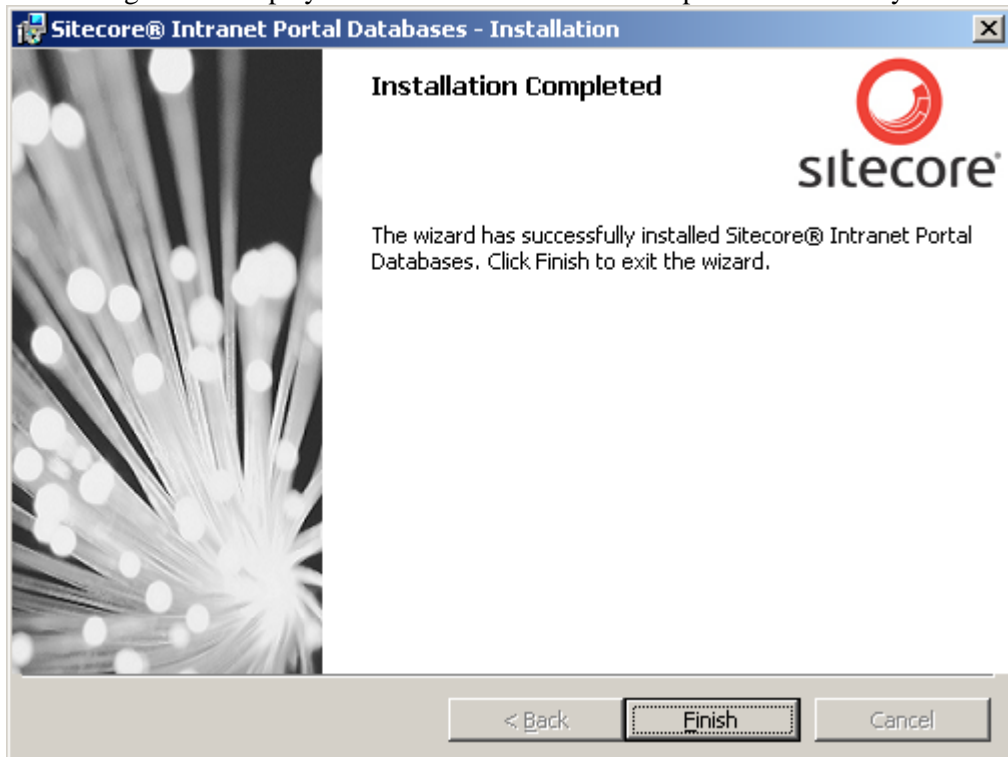
Press **Install** to start the installation process or **Back** if you wish to change something.





7. **Installation complete dialog.**

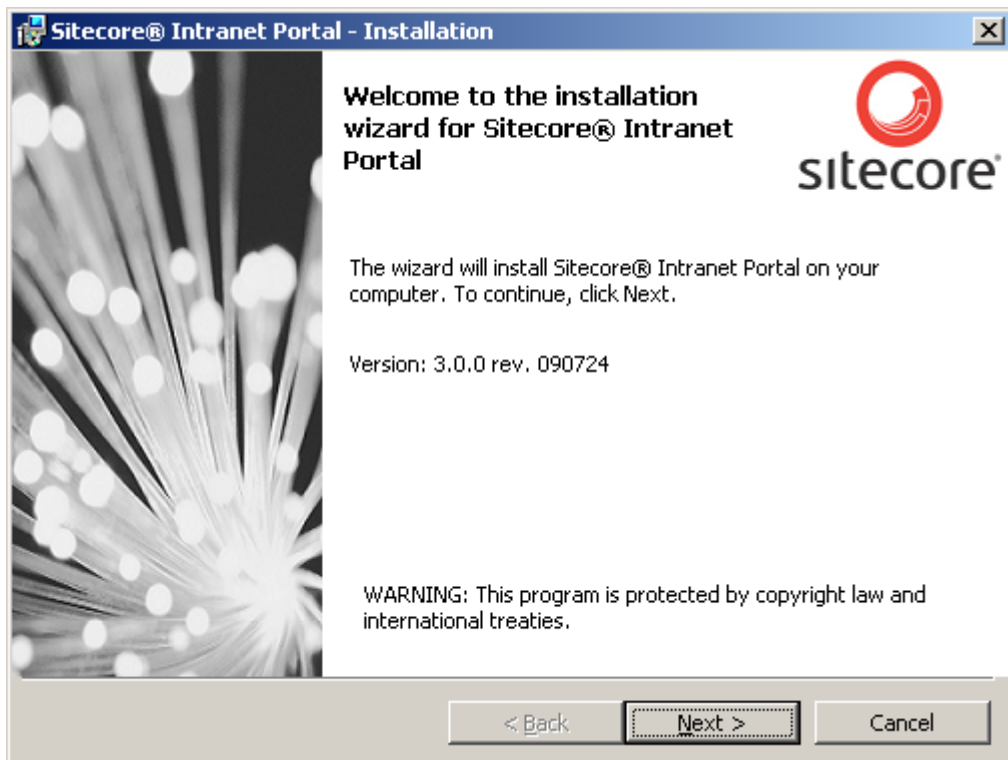
This dialog will be displayed when the installation is completed successfully.



## 1.4 Sitecore Intranet Client Part Setup

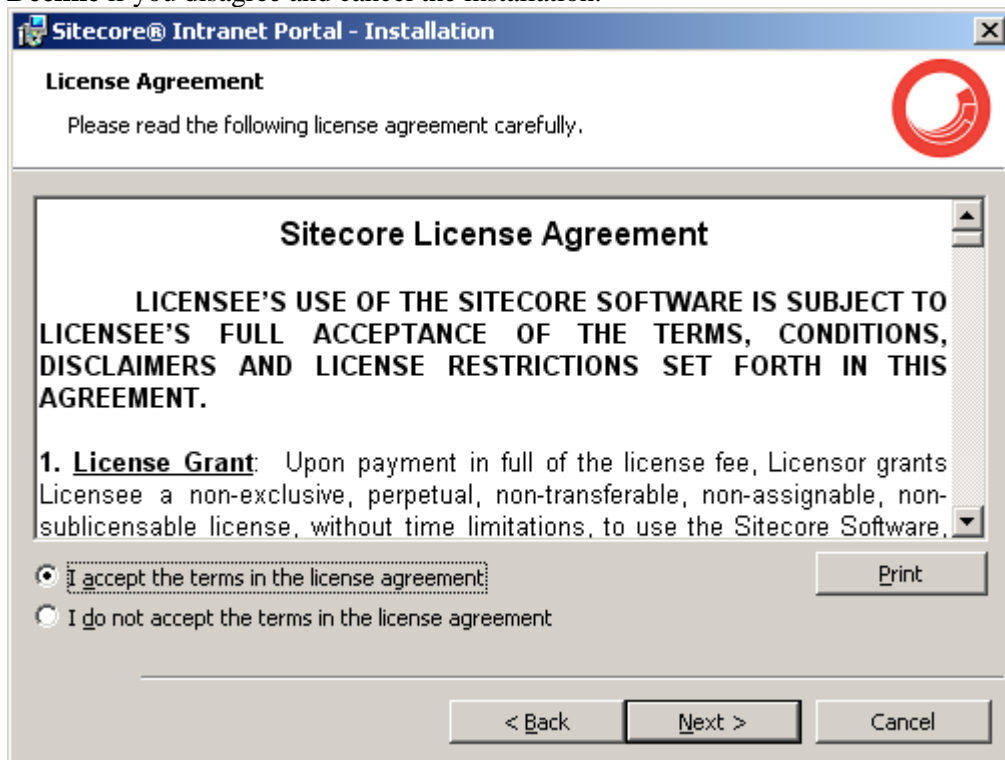
Start the setup\_SCIntranetPortalXXrevXXXXXX.exe file and follow the instructions provided by the setup wizard. Below is a description of the wizard's steps.

1. Review the **Welcome dialog**.



2. **The License Agreement dialog.**  
Read the license terms and select **Accept** if you agree to continue the installation, or

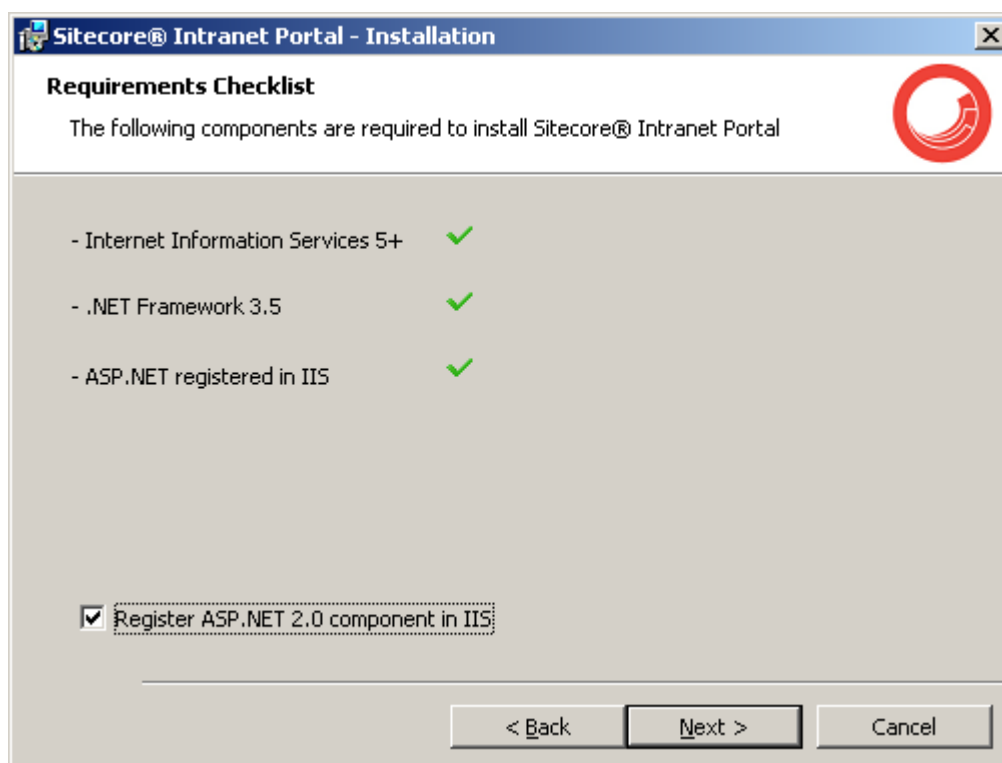
**Decline** if you disagree and cancel the installation.



### 3. The prerequisites dialog.

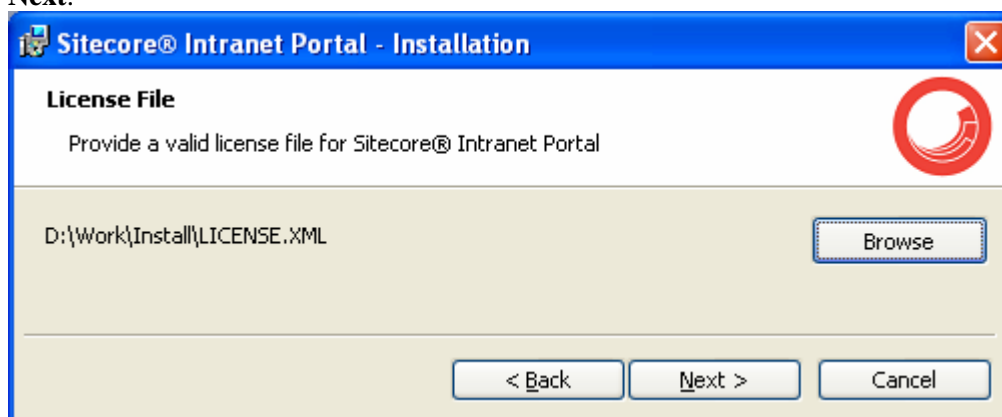
The installation checks the prerequisites at the very beginning of the installation. This dialog shows the results of the check. If your machine satisfies the prerequisites, the green checkmark is displayed; otherwise you will see a red cross mark. There is also an option to install ASP.NET 2.0 component on the chosen site.

This option is checked by default. If the last prerequisite from the list is not satisfied, it is strongly recommended to leave this checkbox checked. If you uncheck it, then you are made responsible for the web site configuration.



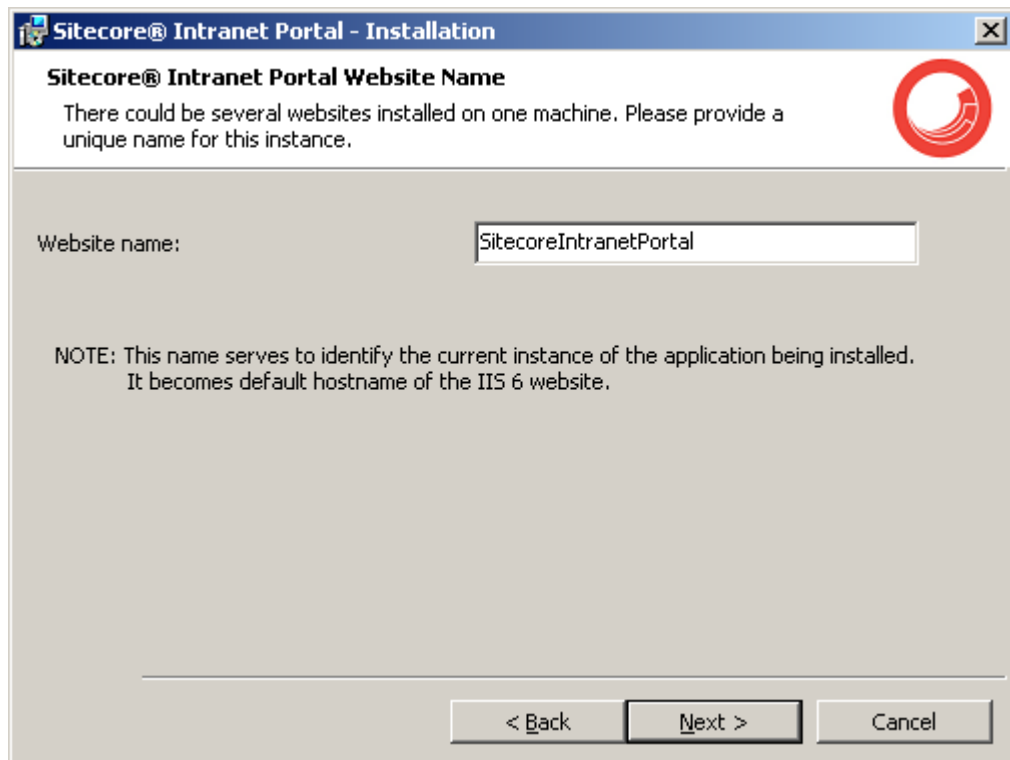
4. **The License dialog.**

Browse and point the valid Sitecore license. Only in this case you will be allowed to proceed with the installation. Click Browse button and select the license file, then click Next.



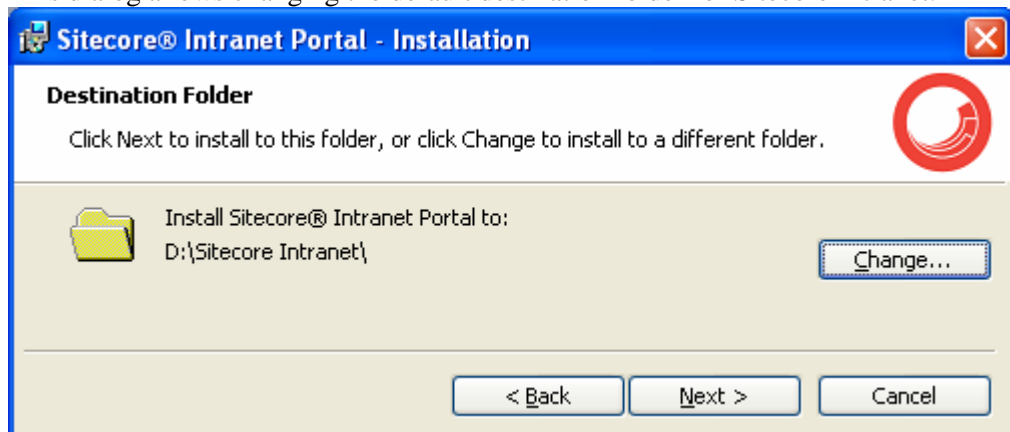
5. **The Website name dialog.**

Enter the name of the Sitecore website here. Due to the fact that several instances of Sitecore can be installed on one machine, this name serves as a unique identifier for the rest of the information related to this particular instance.



6. **The Destination folder dialog.**

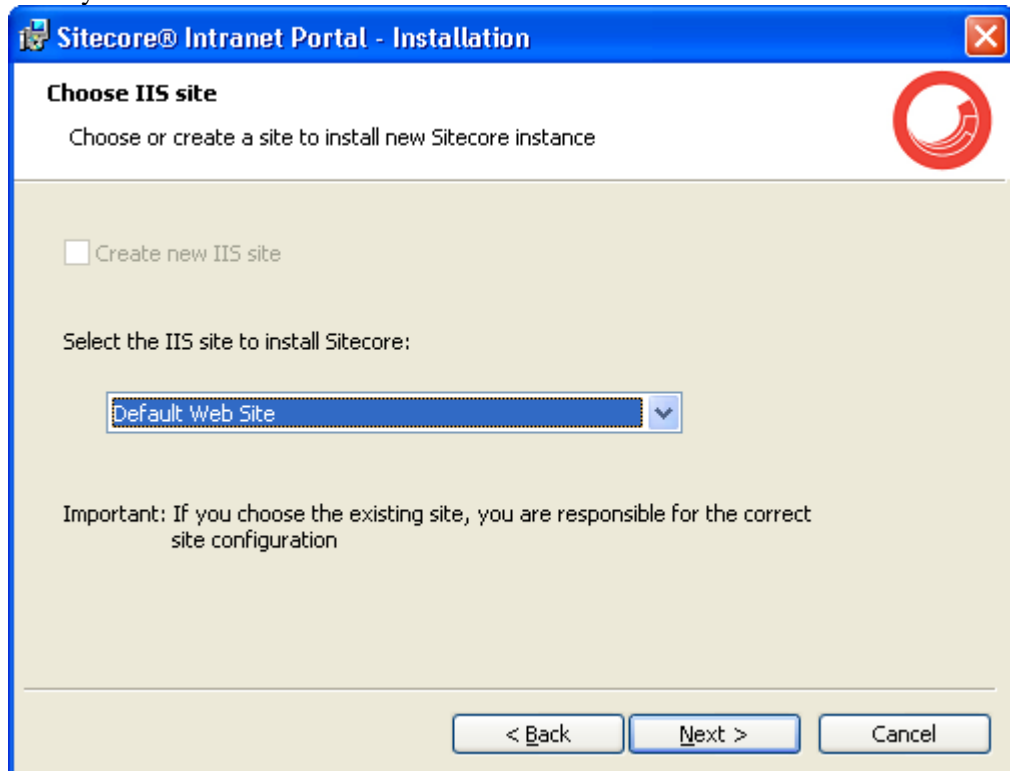
This dialog allows changing the default destination folder for Sitecore Intranet.



7. **Choose IIS site dialog.**

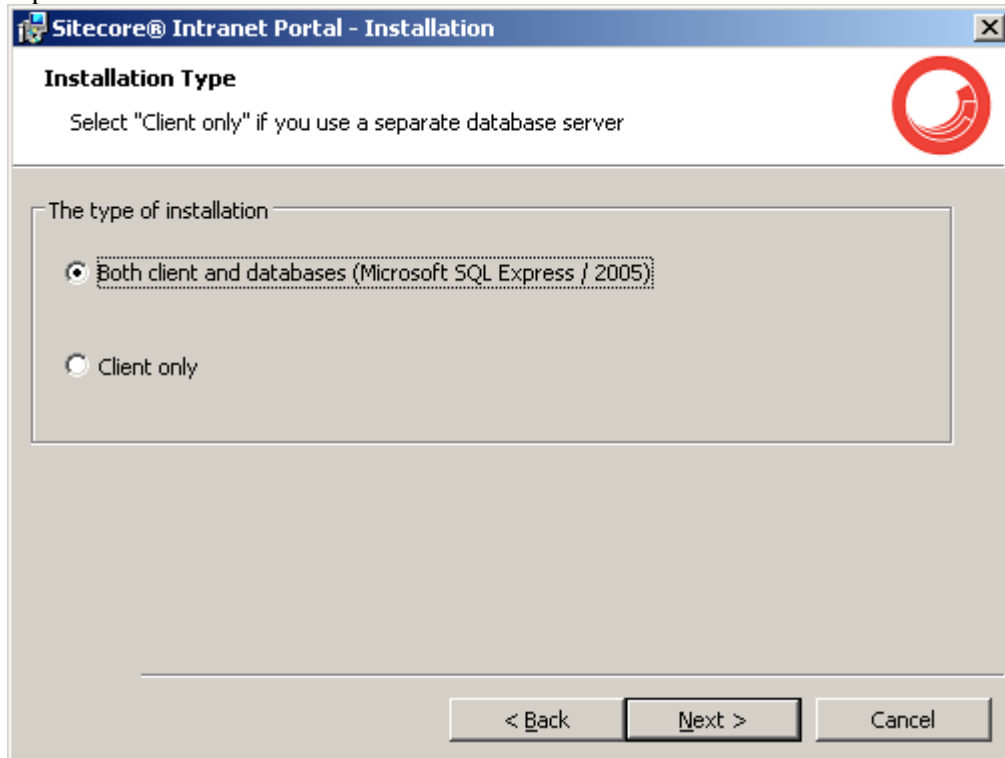
This dialog lets you specify whether you wish to create a new IIS website for the new Sitecore instance, or use any existing one. The checkbox "Create IIS site" is set by default. If you uncheck it, the dropdown menu with all available sites will appear. Choose a site, and Sitecore will be accessible through this site after the installation.

Note: you cannot create new IIS websites in Windows XP.



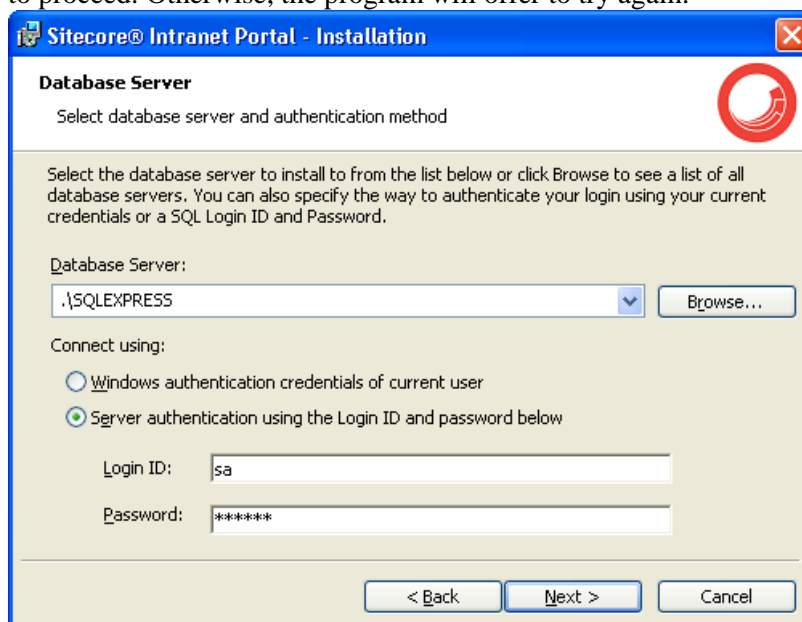
### 8. The Type of Installation dialog.

The installation program offers to provide the installation type: install both client and server side part on this machine or just the client. Select “Client only” if you use a separate database server.



### 9. The SQL login settings dialog.

Provide the connection settings for SQL Express databases here. In case of client only installation type, the name of database server should be entered, where the databases are already installed. When you press **Next**, the installation program will try to establish the connection with the parameters specified. If the attempt is successful, you will be allowed to proceed. Otherwise, the program will offer to try again.

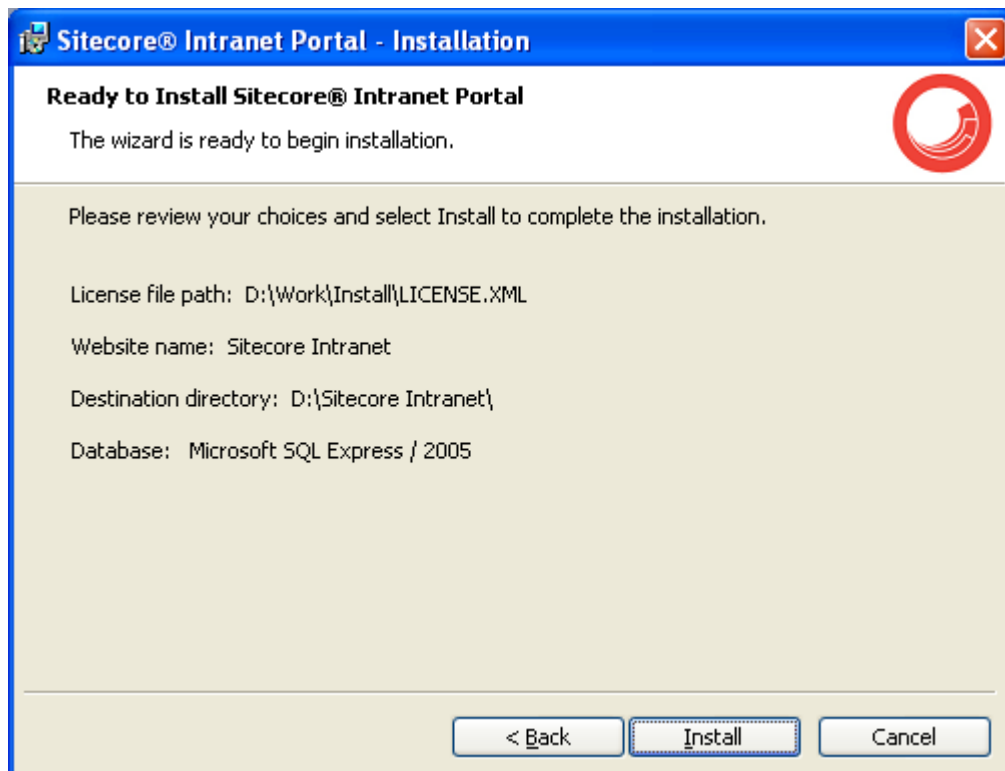


In particular situations server administrators may not want to use the *sa* user to connect to databases.

[Read how to create a new SQL 2005 database account to use with the Sitecore databases.](#)

10. **Ready to install dialog.**

Look through your choices here. There is also an option to switch the IIS root to the newly created Sitecore Intranet instance. Press **Install** if you agree with the settings or **Back**, if you wish to change something.



11. **Installation complete dialog.**

This dialog will be displayed if the installation is completed successfully. You may check the Run Sitecore checkbox to run Sitecore Intranet after clicking the Finish button.

### 1.5 Important Notes:

1. The installation program performs IIS backup at the very beginning. Thus, there is an option to repair the IIS in case of failure.
2. The installation program automatically sets ASP.NET version to 2.0 in IIS without asking a user. The reason is that Sitecore Intranet runs under .NET Framework 3.5.
3. The installation program can install as many instances of Sitecore on one machine as you wish.
4. The Sitecore configuration files are automatically modified according to the settings provided in the wizard.



5. The windows authentication is disabled in the SQL Login settings dialog, Sitecore Intranet supports SQL authentication only.
6. The XmlControls.ThrowException web.config setting specifies if an exception is thrown when an Xml Control cannot be loaded. It is true by default, as long as it provides better debugging possibilities, but under certain conditions it might prevent the Sitecore client from working. Any errors are written to the log.

## 1.6 Troubleshooting

In case the installation program fails, you should zip the log file and attach it to the support request. Below are two cases users may come across:

1. The installation program fails **after** you press the Install button in the Ready to Install dialog.  
In this case the log file is automatically created in the following folder: C:\installlog.txt.  
**Note:** the log file is recreated for each installation, thus you should copy it right after the unsuccessful installation. Otherwise the file will be overwritten.
2. The installation program fails **before** you press the Install button in the Ready to Install dialog.  
In this case you should run the installation once again with the following parameters:  
Setup.exe /V"/log log.txt",  
where log.txt is the log file name. It will be created in the same folder with the .exe file.